



SOLID
TO SUCCEED



MAST LIFT XGR12J

Comply with CE

Standard configuration

- 2-wheel drive
- Lowering and motion alarm
- Tilt alarm
- Horn with adjustable volume
- Emergency stop devices on platform and chassis
- 2-wheel braking system
- Proportional auto leveling system
- Proportional joystick control
- Drive enable
- Full-time positive traction drive
- Telematics front-end interface
- Anti-entrapment protection device
- Hostile environment package
- Thumb rocker steering



Working height
12.65meters



Lift capacity
200Kg



Electric
power



Optional configuration

- Working light assembly
- Platform air line

XCMG FIRE-FIGHTING SAFETY EQUIPMENT CO.,LTD

No.17 Zhujiang East Road, Hi-Tech Development Zone, Xuzhou, Jiangsu, China
mewp@xcmg.com

XGR12J



SOLID
TO SUCCEED

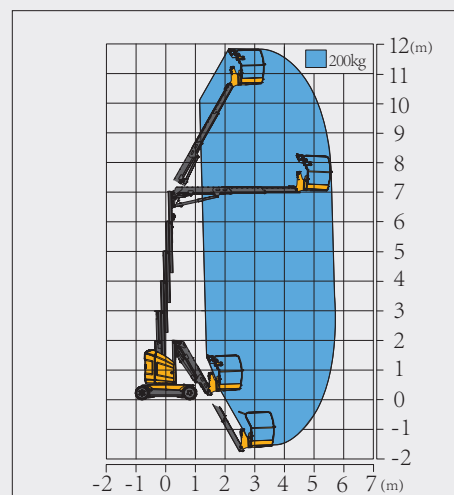
Mast Lift-Electric

Item	Metric	
Dimension		
Overall dimension - stowed	Length	3700mm
	Width	1200mm
	Height	2000mm
Overall dimension - transported	Length	3700mm
	Width	1200mm
	Height	2000mm
Platform dimensions	Length	800mm
	Width	1050mm
	Height	1150mm
Wheelbase		1600mm
Fly jib length (fully retracted/ fully extended)		1965-4165mm
Min. ground clearance		100mm

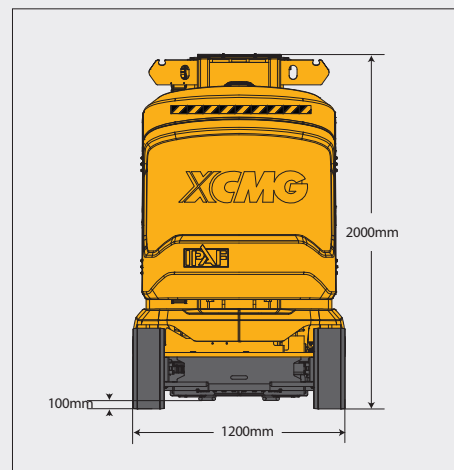
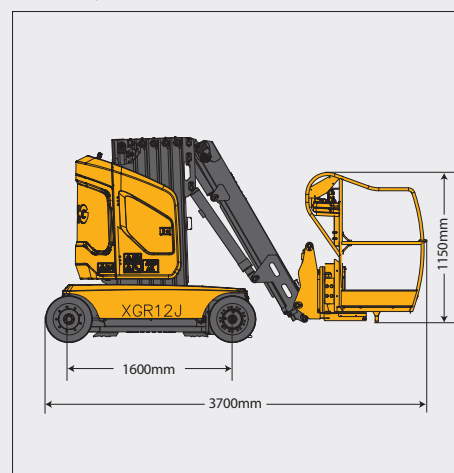
Performance	
Max. working height	12.65m
Max. platform height	10.65m
Max. outreach	5.66m
Max. up and over clearance	7.1m
Max. lift capacity	200kg (unlimited)
Max. platform occupancy	2
Max. chassis allowable angle	X-2.5° / Y-3°(front)3°(back)
Fly boom luffing range	-60°~60°
Turntable rotation	345°
Platform rotation	± 60°
Total weight	4980kg
Driving speed (stowed)	5.5km/h
Driving speed (raised or extended)	0.6 km/h
Min. turning radius (inside/outside)	1700mm/2750mm (front) 820mm/2020mm (back)
Turntable tailswing (stowed)	130mm
Max. gradeability	25% (14°)

Power source	
Control	48V DC proportional control
Traveling motor	3.3kW/32V
Emergency power supply	/
Main power source - battery	48V/265Ah
Main power source - charger	48V/40A
Hydraulic tank capacity	24L

Tire	
Tire size	457mm×178mm
Tire ground pressure	10.83kg/cm ²
Driving wheels	2
Braking wheels	2
Steering wheels	2



Stowed / Trans



The print does not belong to the contract, nor a part of the commercial contract. We reserve the right to revise the product model, parameters, configuration based on the continuous improvement requirements of the product, without prior notice. Pictures are for reference only, and the specific product shall depend on the real product. The final interpretation rights belong to XCMG.