



SOLID
TO SUCCEED



ARTICULATED BOOM LIFT

XGA22ACK1

Comply with CE

Standard configuration

- Dual-entry platform with full-open gate
- 4-wheel drive (standard)
- Axle oscillation
- Lowering and motion alarm
- Tilt alarm
- Horn with adjustable volume
- Overload alarm
- Motor overload protection
- Emergency stop devices on platform and chassis
- Emergency power unit
- 4-wheel braking system
- Platform auto leveling
- Proportional joystick control
- Drive enable
- Full-time positive traction drive
- Telematics front-end interface
- Active anti-entrapment system
- Boom self-weight descent system
- Double-load amplitude control
- Anti-entrapment protection device



Working height
22.21 meters



Lift capacity
256/350Kg



Electric
power



Optional configuration

- Platform power
- Air pipe connected to platform option
- Tool tray
- Working light assembly
- Fall arrest assembly
- Platform anti-squeeze auxiliary rail
- Platform with half-height mesh
- Lithium battery 51.5 V/ 456 Ah
- Solid filled-type tires 836mm×319mm
- Gray filled-type solid tires 836mm×319mm
- Press-fit solid tires 835mm×290mm

XCMG FIRE-FIGHTING SAFETY EQUIPMENT CO.,LTD

No.17 Zhujiang East Road, Hi-Tech Development Zone, Xuzhou, Jiangsu, China
mewp@xcmg.com

XGA22ACK1



SOLID
TO SUCCEED

Articulated Boom Lift-Electric

Item		Metric
Dimension		
Overall dimension - stowed	Length	8490mm
	Width	2400mm
	Height	2380mm
Overall dimension - transported	Length	7900mm
	Width	2400mm
	Height	3000mm
Platform dimensions	Length	1830mm
	Width	760mm
	Height	1150mm
Wheelbase		2500mm
Fly jib length		1850mm
Min. ground clearance		300mm

Performance

Max. working height	22.21m
Max. platform height	20.21m
Max. outreach	12.23m
Max. up and over clearance	9.5m
Max. lift capacity	256kg(unlimited)/350kg(limited)
Max. platform occupancy	2/3
Max. chassis allowable angle	X-5° / Y-5°
1st boom luffing range	0°~70°
2nd boom luffing range	0°~71°
Fly boom luffing range	-65°~70°
Turntable rotation	360°
Platform rotation	160°
Total weight	10400kg
Driving speed (stowed)	4.5km/h
Driving speed (raised or extended)	0.6km/h
Min. turning radius (inside/ outside)	2800mm/5000mm
Turntable tailswing (stowed)	600mm
Max. gradeability	40% (22°)

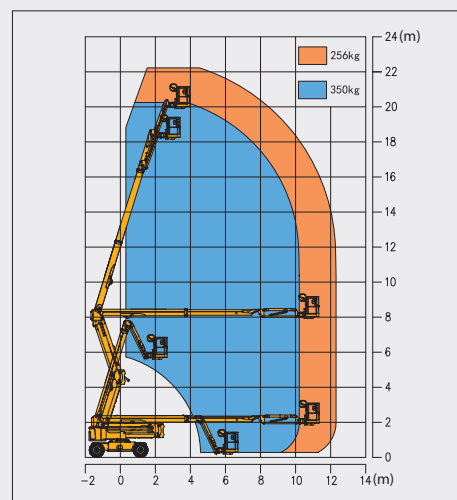
Power source

Maintenance-free lead-acid battery

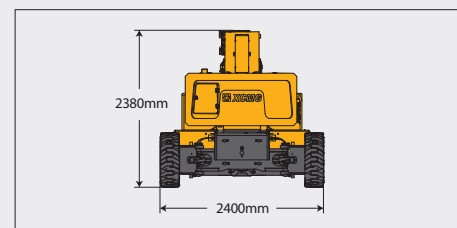
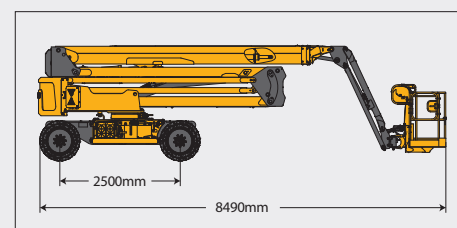
Control	12 V DC proportional control
Traveling motor	3.3 kW/32 V
Emergency power supply	12 V/110 Ah
Main power source - battery	48 V/400 Ah
Main power source - charger	48 V/35 A
Hydraulic tank capacity	82 L

Tire

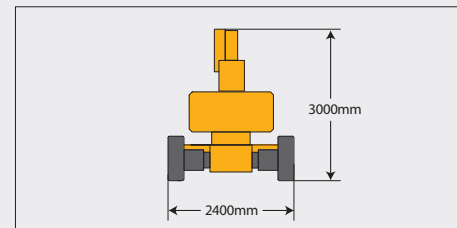
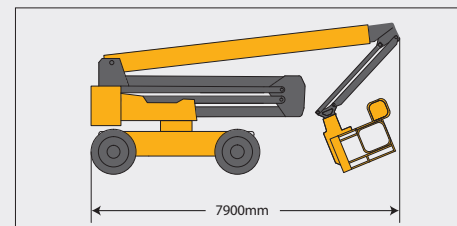
Tire size	835mm×295mm
Tire ground pressure	9.17 kg/cm ²
Driving wheels	4
Braking wheels	4
Steering wheels	2



Stowed



Trans



The print does not belong to the contract, nor a part of the commercial contract. We reserve the right to revise the product model, parameters, configuration based on the continuous improvement requirements of the product, without prior notice. Pictures are for reference only, and the specific product shall depend on the real product. The final interpretation rights belong to XCMG.