



SOLID
TO SUCCEED



ARTICULATED BOOM LIFT XGA20ACE

Comply with CE

Standard configuration

- Dual-entry platform with full-open gate
- Axle oscillation
- Lowering and motion alarm
- Tilt alarm
- Horn with adjustable volume
- Overload alarm
- Motor overload protection
- Emergency stop devices on platform and chassis
- Emergency power unit
- 4-wheel braking system
- Platform auto leveling
- Proportional joystick control
- Drive enable
- Full-time positive traction drive
- Telematics front-end interface
- Active anti-entrapment system
- Boom self-weight descent system
- Double-load amplitude control
- Anti-entrapment protection device



Working height
20.6 meters



Lift capacity
256/350Kg



Electric
power



Optional configuration

- Platform power
- Air pipe connected to platform option
- Tool tray
- Working light assembly
- Fall arrest assembly
- Platform anti-squeeze auxiliary rail
- Platform with half-height mesh
- Lithium battery 51.2 V/ 412 Ah
- Bonded solid non-marking tires 835mm×295mm
- Gray filled-type solid tires 836mm×319mm
- Press-fit solid tires 835mm×290mm
- Mechanical anti-entrapment device

XCMG FIRE-FIGHTING SAFETY EQUIPMENT CO.,LTD

No.17 Zhujiang East Road, Hi-Tech Development Zone, Xuzhou, Jiangsu, China
mewp@xcmg.com

XGA20ACE



SOLID
TO SUCCEED

Articulated Boom Lift-Electric

Item		Metric
Dimension		
Overall dimension - stowed	Length	8490mm
	Width	2490mm
	Height	2380mm
Overall dimension - transported	Length	7900mm
	Width	2490mm
	Height	3000mm
Platform dimensions	Length	1830mm
	Width	760mm
	Height	1150mm
Wheelbase		2500mm
Fly jib length		1850mm
Min. ground clearance		300mm

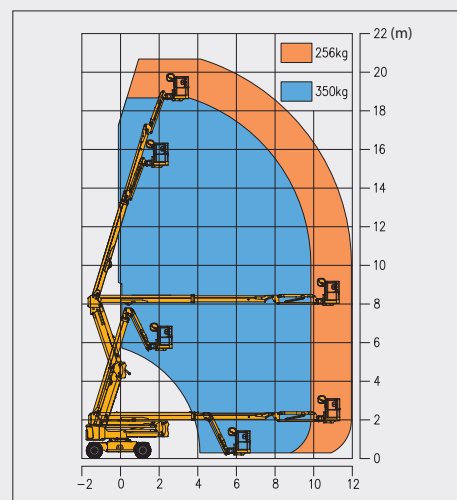
Performance

Max. working height	20.6m
Max. platform height	18.6m
Max. outreach	12m
Max. up and over clearance	7.85m
Max. lift capacity	256kg(unlimited)/350kg(limited)
Max. platform occupancy	2/3
Max. chassis allowable angle	X-3° / Y-3°
1st boom luffing range	0~72°
2nd boom luffing range	0~73°
Fly boom luffing range	-65~70°
Turntable rotation	360°
Platform rotation	160°
Total weight	9100kg
Driving speed (stowed)	4.8km/h
Driving speed (raised or extended)	0.6km/h
Min. turning radius (inside/ outside)	2500mm/5000mm
Turntable tailswing (stowed)	560mm
Max. gradeability	45% (24°)

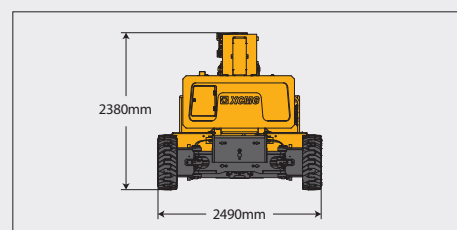
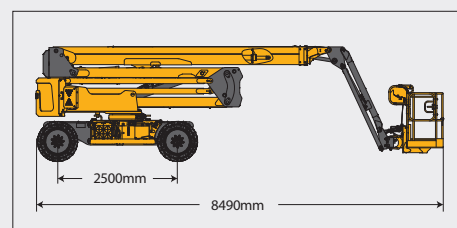
Power source	Maintenance-free lead-acid battery	Lithium battery
Control	12V DC proportional control	
Traveling motor	3.3kW/32V	
Emergency power supply	12V/110Ah	
Main power source - battery	48V/400Ah	51.2V/412Ah
Main power source - charger	48V/35A	51.2V/60A
Hydraulic tank capacity	82L	

Tire

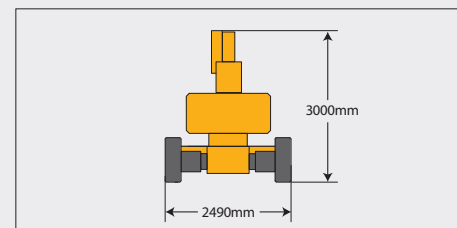
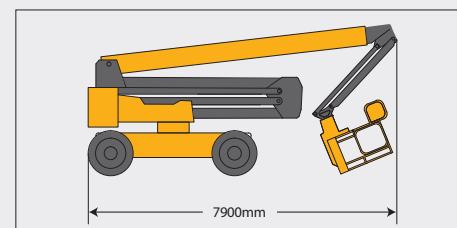
Tire size	836 mm×319 mm
Tire ground pressure	8.7 kg/cm ²
Driving wheels	4
Braking wheels	4
Steering wheels	2



Stowed



Trans



The print does not belong to the contract, nor a part of the commercial contract. We reserve the right to revise the product model, parameters, configuration based on the continuous improvement requirements of the product, without prior notice. Pictures are for reference only, and the specific product shall depend on the real product. The final interpretation rights belong to XCMG.