



SOLID
TO SUCCEED



HYBRID-ARTICULATED BOOM LIFT

XGA18H

Comply with CE

Standard configuration

- 1.83 m(6 ft 0 in) x 0.76 m(2 ft 6 in) working platform
- 320 kg (705 lb) platform capacity
- 160° platform rotation
- 12 V DC auxiliary power
- Lithium battery
- Engine and components
- Bridge drive
- Axle oscillation
- Lowering and moving alarm
- Tilt alarm
- Horn
- Overload alarm
- Motor overload protection
- Emergency stop of platform and chassis
- Emergency power unit
- Bridge drive braking system
- Self-leveling platform
- Proportional joystick control
- Drive enable
- Full time positive traction drive
- Telematics pre-interface
- Active defense protection system



Working height
18.3 meters



Lift capacity
320Kg



Hybrid
power



Optional configuration

- Distribution device optional assembly (220V European standard explosion-proof)
- Distribution device optional assembly (110V British standard explosion-proof)
- Tool tray
- Working light assembly
- Pneumatic pipe layout

XCMG FIRE-FIGHTING SAFETY EQUIPMENT CO.,LTD

No.17 Zhujiang East Road, Hi-Tech Development Zone, Xuzhou, Jiangsu, China
mewp@xcmg.com

XGA18H



SOLID
TO SUCCEED

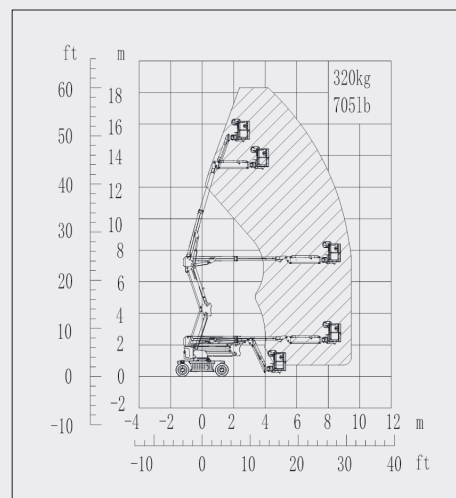
Articulated Boom Lift-Hybrid

Item	Metric	
Dimension		
Overall dimension - stowed state	Length	7360 mm
	Width	2300 mm
	Height	2570 mm
Overall dimension - transportation	Length	7360 mm
	Width	2300 mm
	Height	2570 mm
Platform dimension	Length	1830 mm
	Width	760 mm
	Height	1150 mm
Wheelbase		2500 mm
Fly jib length		1850 mm
Min. ground clearance		300 mm

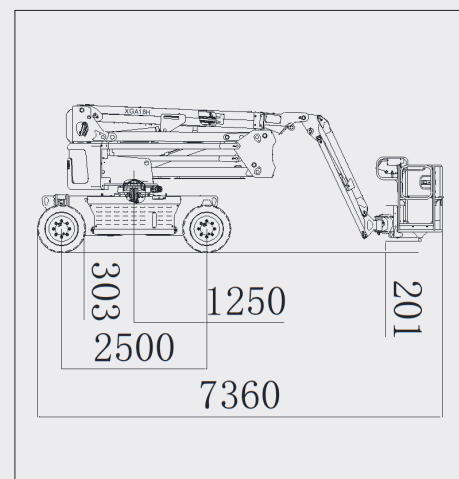
Performance	
Max. working height	18300 mm
Max. platform height	16300 mm
Max. working range	9500 mm
Max. up and over clearance	8200 mm
Max. lift capacity	320kg
Max. number of occupants	2
Max. working slope	X-5°/Y-5°
1st boom luffing range	0°~72°
2nd boom luffing range	-2°~75°
Fly jib luffing range	-65°~70°
Turntable rotation	360°
Platform rotation	160°
Total weight	9000 kg
Driving speed (stowed)	6 km/h
Driving speed (raised or extended)	0.6km/h
Min. turning radius (inside/outside)	3200mm/5200mm(2) 1600mm/3500mm(4)"
Turntable tailswing (stowed)	220 mm
Max. gradeability	40% (21.8°)

Power source	
Control	12 V DC proportional control
Traveling motor	9 kW/34 VAC
Emergency power supply	12 V/ 115 Ah
Main power source - battery	346 Ah/51.2 V
Main power source - charger	48V/60A
Engine model	Kubota Z482
Engine-power/rpm	9.8kW/ (3600r/min)
Max. engine torque	30N · m
Engine emission standard	EU V / US IV / CN IV
Hydraulic tank capacity	95L
Fuel tank capacity	85L

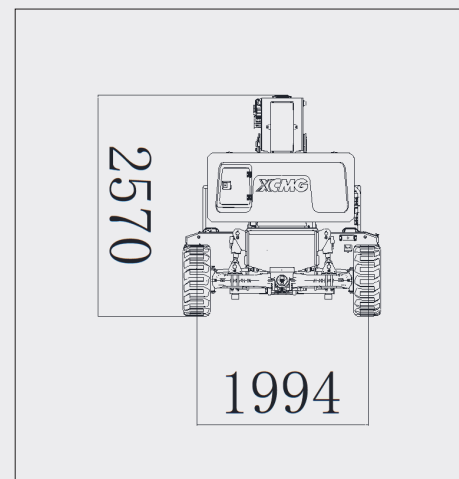
Tire	
Tire size	836mm×319mm
Tire ground pressure	7kg/cm ²
Driving wheels	4
Braking wheels	4
Steering wheels	4



Stowed



Trans



The print does not belong to the contract, nor a part of the commercial contract. We reserve the right to revise the product model, parameters, configuration based on the continuous improvement requirements of the product, without prior notice. Pictures are for reference only, and the specific product shall depend on the real product. The final interpretation rights belong to XCMG.