

ARTICULATED BOOM LIFT

XGA16ACK1

Comply with CE

Standard configuration

- 1.4m×0.7m work platform
- 12 V DC auxiliary power
- 2-wheel drive (standard)
- Lowering and moving alarm
- Tilt alarm
- Horn
- Overload alarm
- Motor overload protection
- Emergency stop of platform and chassis
- Emergency power unit
- 2-wheel braking system
- Self-leveling platform
- Proportional joystick control
- Drive enable
- Full time positive traction drive
- Telematics pre-interface
- Active defense protection system



Working height
16 meters



Lift capacity
230Kg



Electric
power



Optional configuration

- Platform power supply
- Tool tray
- Working light assembly
- Platform with half-height mesh panel
- Gray environmental solid tires 720mm×220mm
- Perfusion-type tires 731mm×225mm

XCMG FIRE-FIGHTING SAFETY EQUIPMENT CO.,LTD

No.17 Zhujiang East Road, Hi-Tech Development Zone, Xuzhou, Jiangsu, China
mewp@xcmg.com

XGA16ACK1



SOLID
TO SUCCEED

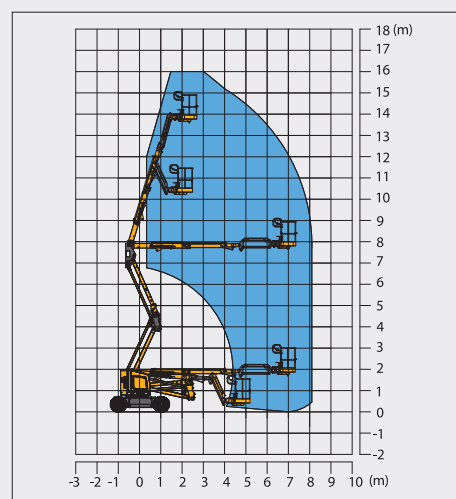
Articulated Boom Lift-Electric

Item	Metric	
Dimension		
Overall dimension - stowed state	Length	6560mm
	Width	1750mm
	Height	2000mm
Overall dimension - transportation	Length	6560mm
	Width	1750mm
	Height	2000mm
Platform dimension	Length	1400mm
	Width	700mm
	Height	1150mm
Wheelbase		2010mm
Fly jib length		1240mm
Min, ground clearance		200mm

Performance	
Max. working height	16m
Max. platform height	14m
Max. working range	8.1m
Max. up and over clearance	7.6m
Max. lift capacity	230kg
Max. number of occupants	2
Max. working slope	X-3°/Y-3°
1st boom luffing range	-12°~61°
2nd boom luffing range	-5°~73°
Fly jib luffing range	-65°~70°
Turntable rotation	355°
Platform rotation	160°
Total weight	6700kg
Driving speed (stowed)	4.8km/h
Driving speed (raised or extended)	0.6km/h
Min. turning radius (inside/outside)	1100mm/3300mm
Turntable tailswing (stowed)	0mm
Max. gradeability	30% (16.7°)

Power source	Maintenance-free lead acid
Control	12V DC proportional control
Traveling motor	3.3kW/32V
Emergency power supply	12V/115Ah
Main power source - battery	48V/400Ah
Main power source - charger	48V/35A
Hydraulic tank capacity	25L

Tire	
Tire size	720mm×220mm
Tire ground pressure	7.37kg/cm ²
Driving wheels	2
Braking wheels	2
Steering wheels	2



Stowed/Trans

