

As the technology progresses, the product will continue to improve and the technical information of the sample may differ from the actual product.
The actual supply status of the product shall be subject to the sales contract and the sample shall be for reference only.
If you would like to get the latest information about related products, please keep in touch with us.



XR240E

Rotary Drilling Rig



XCMG Foundation Construction Machinery Co.,Ltd

Address: No.1 XCMG Road, Qingshanquan Town, Jiawang District, Xuzhou, Jiangsu, China

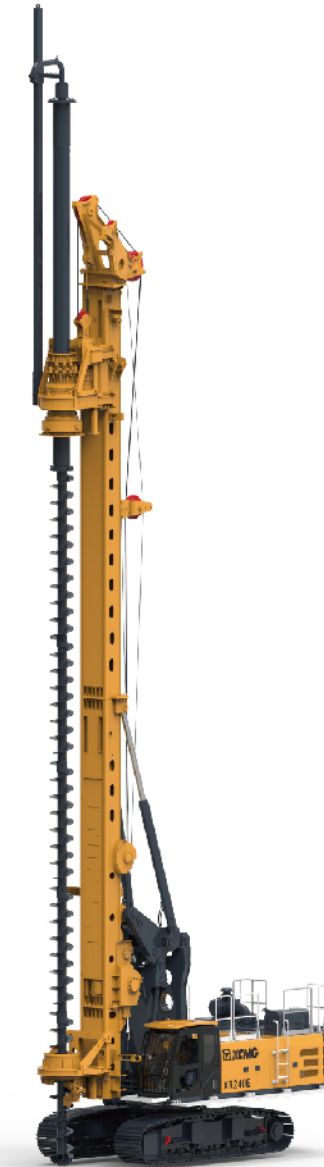
Sales and Service Hotline: +86 400-110-9999

Postcode: 221137

Website: <http://www.xcmg.com/xgjc/>



Edition: 1st, 09, 2024
Printing date: 09, 2024



XCMG FOUNDATION CONSTRUCTION MACHINERY BUSINESS DIVISION



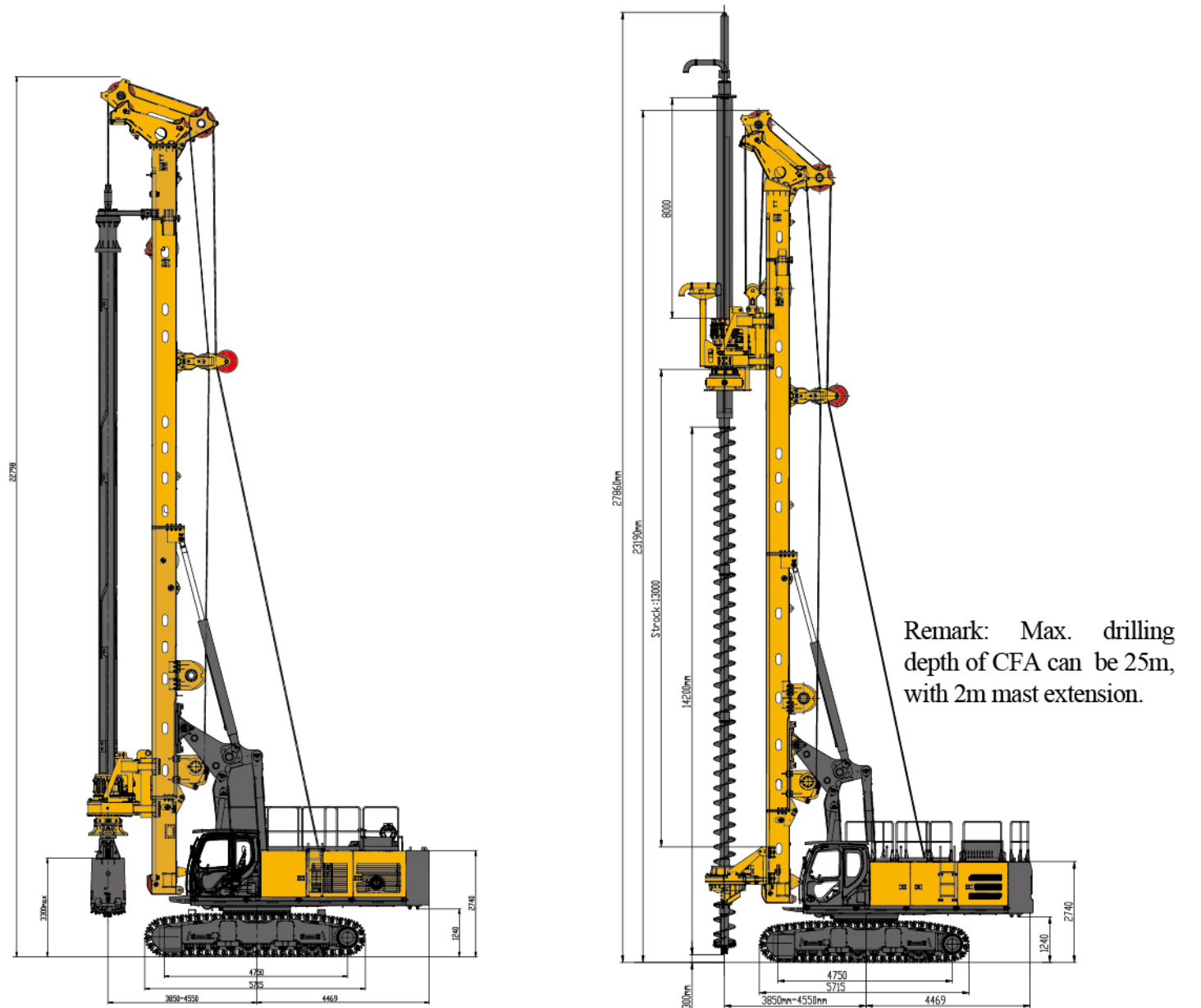
XCMG Foundation Construction Machinery Business Division (XCMG Foundation) is one of XCMG’s core enterprises focusing on the research, development, manufacturing and sales of piling machinery, trenchless machinery, coal mining machinery, mining and tunneling machinery, and resource drilling and production machinery, as well as construction method technical support, engineering construction and other full value chain activities to provide customers with comprehensive solutions.

XCMG Foundation centers on technological innovation and quality improvement. Currently, the trenchless machinery ranks first in the world and the piling machinery is in the first class. Roadheaders, drill jumbos, deep well drilling rigs and other products have leapt to the forefront of the domestic market. Various types of products have been exported to more than 80 countries and regions.

At present, XCMG Foundation has moved to a new intelligent manufacturing base which covers a total area of 110 hectare, in accordance with the requirements of digitization, greening, and intelligence, and is fully committed to building the world's top brand for foundation construction machinery.



Items		Units	Values
Main data	Working height	m	22.7
	Overall operating weight(standard)	t	87
	Max. drilling diameter	mm	Φ2000(crowd winch)
	Max. drilling depth	m	56
Dimensions	Working condition	mm	8870×4400×22734
	Transport condition	mm	17530×3250×3715
Engine	Model	/	Cummins L9
	Rated power	kW	252
	Emission standard	/	EU stage V
	Fuel tank capacity	L	600
Rotary drive	Rated output torque	kNm	240
	Rotary speed	rpm	7-30
Crowd winch	Max. crowd force push/pull	kN	250/250
	Max. stroke	m	13
Main winch	Max. pulling force	kN	240
	Max. line speed	m/min	60
Auxiliary winch	Max. pulling force	kN	100
	Max. line speed	m/min	70
Mast inclination	Lateral/forwards/backwards	°	±3/5/15
Undercarriage	Max. travel speed of overall unit	km/h	1.5
	Min. ground clearance	mm	450
	Width of triple grouser track shoes	mm	800
	Width of crawlers retracted/extended	mm	3250-4400
	Max. climbable gradient of overall unit	%	35
	Ground pressure	kPa	125
Hydraulic system	Hydraulic oil tank capacity	L	780
	Working pressure	bar	345



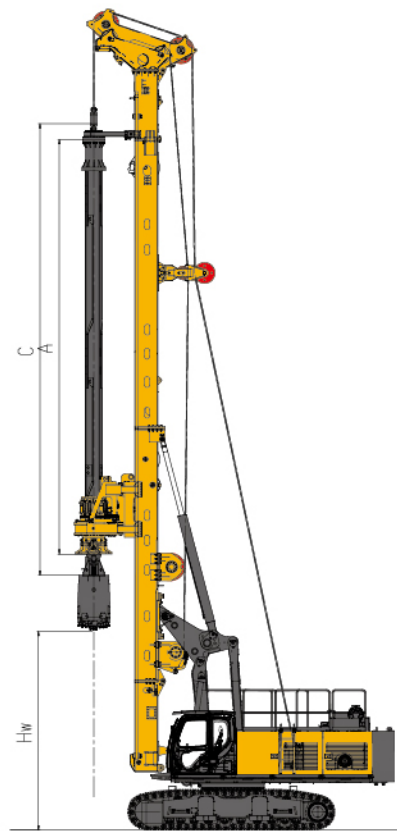
Kelly drilling	
Upper kelly guide	Available
Max. drilling diameter	
Uncased	Φ2000 mm
Cased	Φ1700 mm
Operating weight, approx.	87 t
With kelly bar	10.5 t
With bucket	1.5 t

CFA drilling	
Kelly extension	8 m
Max. drilling depth	
With auger cleaner	21m
Without auger cleaner	21.5m
Max.drilling diameter with auger cleaner	Φ1000 mm
Max. extraction force with main winch and crowd winch	730kN



Special applications	
Max. drilling diameter	
Uncased	φ2000 mm
Cased	φ1700 mm
Stroke of rotary drive	
With bottom mast	5 m
Without bottom mast	2.8 m
Max. drilling depth	
JS440-5×5.9 (Operating radius: 3850mm)	23 m
JS440-5×5.3 (Operating radius: 6430mm)	21 m

Special applications	
Max. drilling diameter	
Lower mast extension	No
Max. drilling diameter	φ3000mm
Max. drilling depth	—

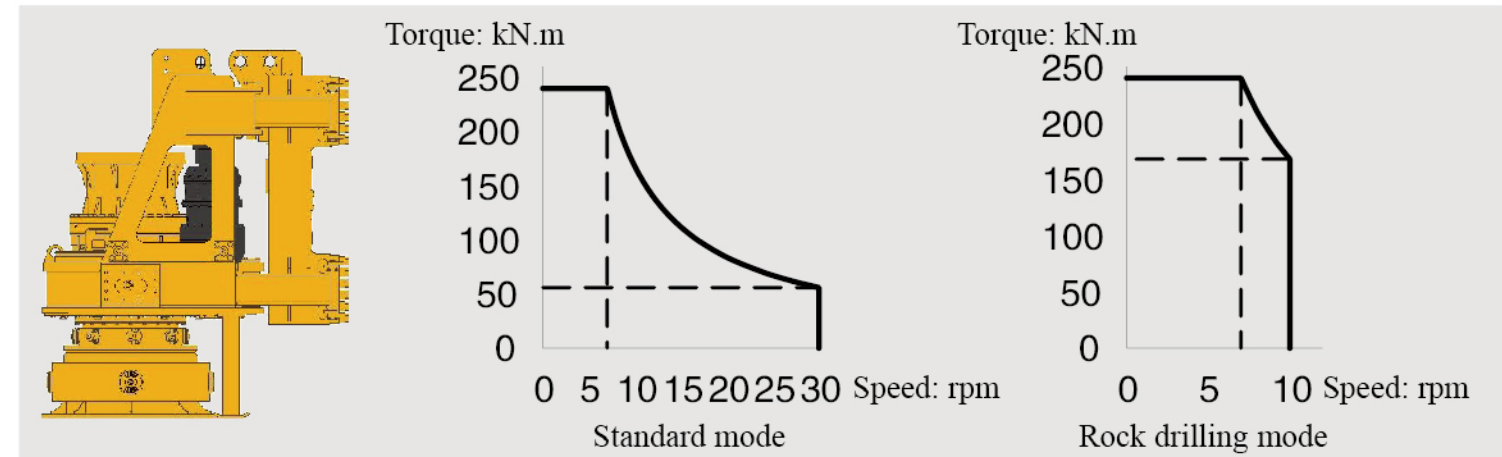


A: Length of single section Kelly bar
B: Length of Kelly bar (extracted)
C: Length of Kelly bar (retracted)
Hw: Max. clearance to drilling tool
T: Drilling depth
G: Weight of Kelly bar

Drilling data have been determined with an effective tool length of NL = 1.5 m and with the mast at a minimum operating radius. Further drilling depths, diameters and other Kelly types on request, please contact us.

Drilling depth – uncased Kelly drilling

3-section interlocking Kelly	A (m)	B (m)	C (m)	G (kg)	Hw (m)	T (m)
JS440-3×15.5	15.5	44.3	17.1	9600	1.4	42
JS440-3×14.5	14.5	41.3	16.1	9000	2.4	39
JS440-3×13.5	13.5	38.3	15.1	8400	3.4	36
JS440-3×12.5	12.5	35.3	14.1	7800	4.4	33
JS440-3×11.5	11.5	32.3	13.1	7200	5.4	30
JS440-3×10.5	10.5	29.3	12.1	6600	6.4	27
JS440-3×9.5	9.5	26.3	11.1	6000	7.4	24
4-section interlocking Kelly	A (m)	B (m)	C (m)	G (kg)	Hw (m)	T (m)
JS440-4×15.5	15.5	58.5	17.1	11000	1.4	56
JS440-4×14.5	14.5	54.5	16.1	10400	2.4	52
JS440-4×13.5	13.5	50.5	15.1	9800	3.4	48
JS440-4×12.5	12.5	46.5	14.1	9200	4.4	44
JS440-4×11.5	11.5	42.5	13.1	8600	5.4	40
JS440-4×10.5	10.5	38.5	12.1	8000	6.4	36
JS440-4×9.5	9.5	34.5	11.1	7400	7.4	32



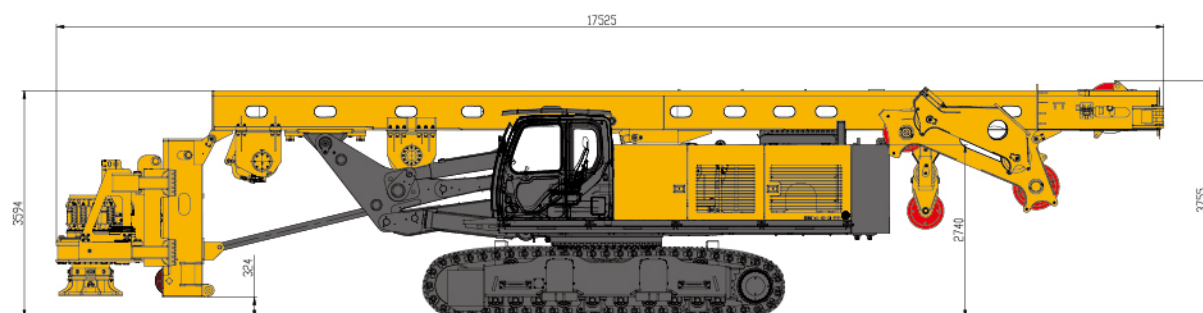
		Kelly drilling	CFA drilling
Chassis	Retractable crawler chassis	●	●
	Casing oscillator hydraulic interface	○	△
	Casing oscillator mechanical interface	○	△
	Chassis auxiliary disassembly and assembly outriggers	○	○
Upper structure	Wireless remote control walking	○	○
	Cummins LP diesel engine Stage V – US EPA Tier 4F	○	○
	Double boom luffing mechanism	●	●
	Luffing limit	●	●
	Automatic centralized lubrication system	●	●
	Sound-light alarm	●	●
	LED lighting system	●	●
	Tail safety monitoring	●	●
	Right side safety monitoring	●	●
	Double side foldable pedal	●	●
	Double side foldable ladder	●	●
	Fire extinguisher 2 × 6 kg	●	●
	Top safety fence	●	●
	Fuel self priming pump	●	●
	Automatic shut-off while refueling	○	○
	Fixed base of concrete pipe	△	○
	Concrete pipe	△	○
	Independent drilling mast support	●	●
	Automatic fire extinguishing system	○	○
Cab	FOPS	●	●
	Front protective grille	●	●
	Rear view mirror	●	●
	Electric double speed wiper	●	●
	Front sun blind	●	●

		Kelly drilling	CFA drilling
Cab	Top sun blind	●	●
	Cold and warm air conditioner	●	●
	Level meter	●	●
	Reading light	●	●
	Cigarette lighter	●	●
	Fire extinguisher	●	●
	Safety hammer	●	●
	Clothes hook	●	●
	Lap belt	●	●
	Air suspension seat	●	●
	Radio	●	●
	Cushion depth and inclination adjustment	○	○
	Seat electric heating function	○	○
	Seat mechanical lumbar support	○	○
	Seat massage function	○	○
Hydraulic and control system	Filter clogging alarm	●	●
	Hydraulic oil suction alarm	●	●
	Oil suction filter element	●	●
	Centralized pressure measuring valve block	●	●
	GPS	○	○
	PLC intelligent control	●	●
	12.1 inch touch screen display	●	●
	Infrared surveillance camera	●	●
	Automatic rotary positioning	○	△
	Rotation angle display	●	●
	Real time display of drilling depth	●	●
	Sound-light alarm for rotation and walking	●	●
	Multi gear control of rotary drive	●	●
	Rotary drive standard mode	●	●
	Rotary drive rock drilling mode	●	●
	Rotary drive torque display	●	●
	Rotary drive speed display	●	●
	Rotary drive cruise control	●	●
	Automatic spin-off	●	△
	High-speed spin-off	△	△
	Rotary drive torque limit	○	○
	Rotary drive automatic pressure limit	○	○
	Stepless pressurization regulation	●	●
	Double speed control of pressurization	△	△
	Height limit of main winch	●	●
	Lifting force display of main winch	●	●

		Kelly drilling	CFA drilling
Hydraulic and control system	Lifting speed display of main winch	●	●
	Bottom contact protection of main winch	●	●
	Double floating control of main winch	●	●
	Automatic engine idling	●	●
	Intelligent fault monitoring	●	●
	Manual/automatic adjustment of drilling mast verticality	●	●
	Mast verticality detection	●	●
	Switch of eight languages	●	●
	Cooperative control of main winch and crowd winch	△	●
	Mechanical limit of rotary drive height	●	●
	Electric limit of rotary drive height	●	●
	Monitoring technology of Kelly bar anti stuck	○	△
	Height limit of auxiliary winch	○	○
	Lifting force display of auxiliary winch	○	○
	Landing leg of drilling mast(crowd winch)	●	●
	Cathead one key folding	△	△
Drilling mast	One key folding of upper drilling mast	△	△
	Oil cylinder of lower drilling mast folding	△	△
	Concrete pipe base of drilling mast	○	○
	Drilling mast limit (front, rear, left and right)	○	○
	φ419 assembled drive sleeve	△	●
	φ440 welded drive sleeve	●	△
Rotary drive	Three-stage vibration damping system	●	△
	Box four-sealing structure	●	●
	Anti suction technology of motor	●	●
	Bracket and box vertical pin structure	●	●
	Casing drive device	●	●
	12 m machine clearance working height	○	△
	Dismantle the bottom drilling mast to meet large diameter drilling	○	△
Other technologies	6 m stroke φ273 extension rod	△	●
	8 m stroke φ273 extension rod	△	○
	16.7m CFA drilling tool length	△	●
	Mechanical guide cylinder	△	○
	Star type mechanical soil cleaner	△	○
	Hydraulic rotary soil cleaner	△	●
	CFA automatic lifting control technology	△	○

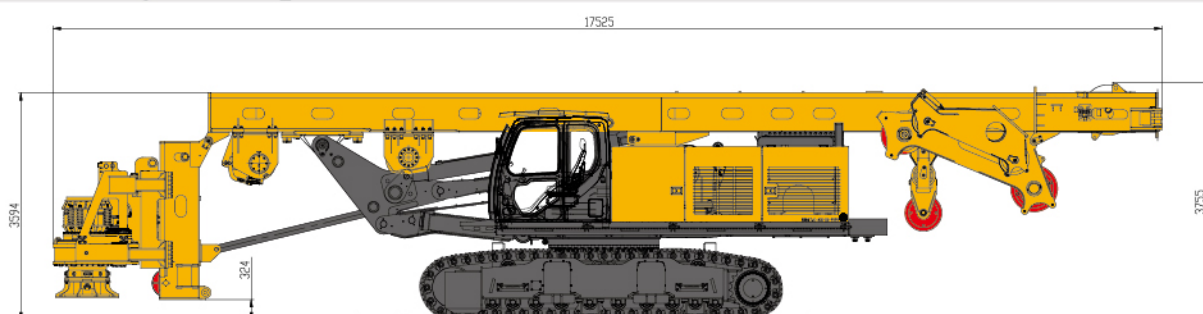
Standard : ● Optional : ○ Not available : △

Transport



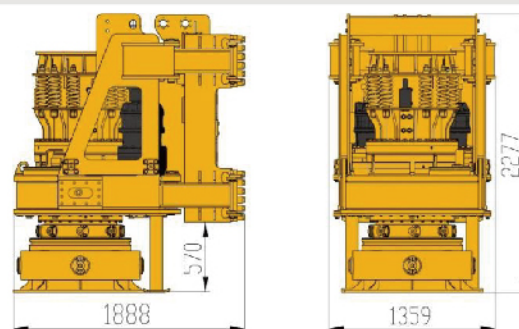
Weight of transport: 76 t

Disassembly Transport



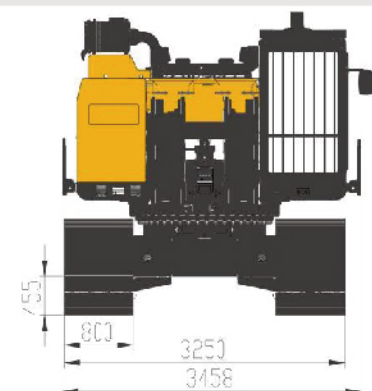
Weight of disassembly transport: 63.5 t

Rotary Drive



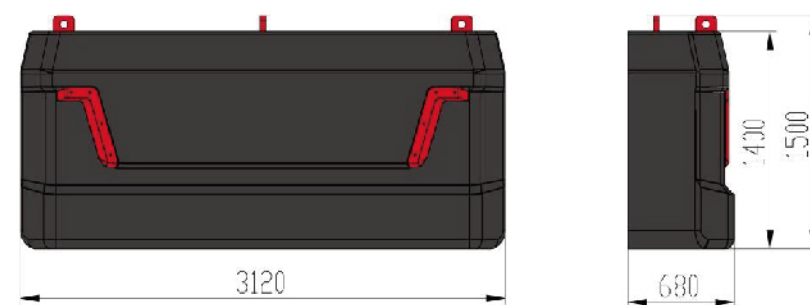
Weight of rotary drive: 3.8 t

Front View



Weight: 40.8 t

Counterweight



Weight of counterweight: 9.13 t

